

Security Driven by **Intelligence**

GANZ[®]
Security Solutions
by 

IP CAMERA GUIDE 2017

ganzsecurity.com

Security Driven by **Intelligence**

Intelligence Driven by Design



Ganz Security is a division of CBC AMERICAS Corp. Ganz® is a registered trademark of the CBC Group.

Contents

- 5 PixelPro with GXi Imbedded Intelligence
- 10 Pinhole Series with Imbedded Intelligence
- NEW** 12 Ganz Thermal with GXi Imbedded Intelligence
- 14 GXi Imbedded Intelligence Content Analytics
- 16 PixelPro Series IP Cameras
- 23 GENSTAR IP Camera Series

CBC reserves the right to modify product specifications without prior notice and assumes no responsibility for errors in this publication. All products mentioned in this publication are acknowledged to be the property of their respective trademark owners.



About Ganz

Ganz Security by CBC is a global leader in the design, development and manufacture of world-class, trend setting security solutions. The Ganz brand offers integrated solutions across multiple market segments and includes an extensive selection of products including IP and analog cameras, performance driven optics, a diverse range of intelligent video analytics, discreet enclosures, video management software and a full range of recording and display devices. Ganz Security's state-of-the-art products are backed by exceptional technical support and industry leading customer service and are designed for easy integration and maximum scalability for any system requirements.

Design Center

To further our commitment, the Ganz Design Center was developed to take the guesswork out of building a truly effective surveillance solution. From start to finish, our technical experts work directly with you to design a system that is built around your needs— with the right products, the right technology and the right level of support.

Our exceptional "VIP" level of support backs all of our products. With offices on the East Coast, West Coast and Mexico City, our customer service and technical teams are available to answer questions or to assist in configuring a system with one vision—your total security.



Ganz Security is a division of CBC AMERICAS Corp. Ganz® is a registered trademark of the CBC Group.

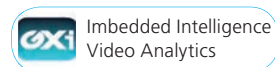
BOX & DOME CAMERAS with GXi IMBEDDED INTELLIGENCE



	INDOOR BOX CAMERA	INDOOR DOME	OUTDOOR DOME
	ZN-NH22XE	ZN-DN312XE-M	ZN-DNT352XE
Sensor	1/2.7" CMOS	1/2.7" CMOS	1/2.7" CMOS
Compression format	H.264, MJPEG	H.264, MJPEG	H.264, MJPEG
Max. resolution	1080p	1080p	1080p
Effective pixels	1920 x 1080	1920 x 1080	1920 x 1080
Compression FPS	30fps@HD 1080p	30fps@HD 1080p	30fps@HD 1080p
Lens	CS-Mount	3-9mm, F1.2 with ProSet Motorized Focus & Zoom	3-9mm, F1.2
Horizontal FOV	-	93.0° (Wide) to 31.7° (Tele)	93.0° (Wide) to 31.7° (Tele)
Iris control	Manual / DC Iris	DC-Iris	DC-Iris
S/N ratio	50dB or more	50dB or more	50dB or more
Video output	1 x BNC (for installation)	1 x BNC (for installation)	1 x BNC (for installation)
Alarm in-/output	1 / 1	1 / 1	1 / 1
Audio in-/output	1 / 1	1 / 1	1 / 1
Audio codec	G.711	G.711	G.711
Day/Night Performance	True Day/Night	True Day/Night	True Day/Night
Minimum illumination	1.0 Lux (Color) 0.001 Lux (B/W, Sens-up 32x)	1.0 Lux (Color) 0.001 Lux (B/W, Sens-up 32x)	1.0 Lux (Color) 0.001 Lux (B/W, Sens-up 32x)
AGC/BLC/DNR/DWDR	Yes / Yes / Yes / Yes	Yes / Yes / Yes / Yes	Yes / Yes / Yes / Yes
Network interface	10/100 Base T	10/100 Base T	10/100 Base T
Protocols	TCP/IP, UDP/IP, HTTP, RTSP, RTCP, RTP/UDP, RTP/TCP, SNTP, mDNS, UPnP, SMTP, SOCK, IGMP, DHCP, DDNS, SSL v2/v3, IEEE 802.1X, SSH, SNMP v2/v3		
Remote access	IE 7.0+	IE 7.0+	IE 7.0+
Micro SD Storage	SD/SDHC/SDXC supported (Card not included)		
Motion detection	Yes	Yes	Yes
Power source	12VDC	12VDC	12VDC
PoE	Support (IEEE 802.3af)	Support (IEEE 802.3af)	Support (IEEE 802.3af)
Power consumption	400mA@12VDC	400mA@12VDC	5.28W (with heater: 22.8W)
Operating environment	32°F ~ 122 °F	32°F ~ 122°F	-40°F ~ 122°F [PoE] 32°F ~ 122°F; Built-in heater
Housing/ Color / IR	Aluminium	Polycarbonate	Aluminium /IP66
Weight	1.1 lbs. (without lens)	1.1 lbs.	2.6 lbs.
Dimensions	2.8" W x 2.5 H x 5.5" D	5.7"ø x 4.8"	4.5"ø x 5.1"(H)
Certifications	ONVIF (Profile S and G), CE, FCC	ONVIF (Profile S and G), FCC, CE	ONVIF (Profile S and G), FCC, CE, IP66

See page 9 for mounting accessories

See page 15 for GXi License List



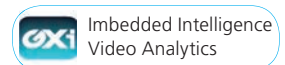
DOMES CAMERAS with GXi IMBEDDED INTELLIGENCE



	INDOOR DOME	INDOOR DOME	OUTDOOR IR DOME	REPOSITIONABLE OUTDOOR DOME	REPOSITIONABLE INDOOR DOME
	ZN1-D4FN5	ZN1-D4NMZ43L	ZN-DNT352XE-MIR	ZN-DNT372XE-MPD	ZN-DN332XE-MPD
Sensor	1/2.9" CMOS		1/2.7" CMOS		
Compression format	H.264, MJPEG	H.264, MJPEG	H.264, MJPEG	H.264, MJPEG	H.264, MJPEG
Max. resolution	1080p	1080p	1080p	1080p	1080p
Effective pixels	1920 x 1080	1920 x 1080	1920 x 1080	1920 x 1080	1920 x 1080
Compression FPS	30fps@HD 1080p	30fps@HD 1080p	30fps@HD 1080p	30fps@HD 1080p	30fps@HD 1080p
Lens	4.0mm	3 – 9mm, F1.2 with ProSet Motorized Focus & Zoom			
Horizontal FOV	84.4°	133.5° (Wide) to 40.8° (Tele)	93.0° (Wide) to 31.7°(Tele)		
Iris control	-	DC-Iris	DC-Iris	DC-Iris	DC-Iris
S/N ratio	50dB or more	50dB or more	50dB or more	50dB or more	50dB or more
Video output	-	1 x BNC (for installation)	1 x BNC (for installation)		
Alarm in-/output	1 / 1	1 / 1	1 / 1	1 / 1	1 / 1
Audio in-/output	-	-	1 / 1	1 / 1	1 / 1
Audio codec	-	-	G.711	G.711	G.711
Day/Night Performance	Digital Day/Night	True Day/Night	True Day/Night	True Day/Night	True Day/Night
Minimum illumination	1.0 Lux (Color) 0.001 Lux (DSS on)	1.0 Lux (Color) 0 Lux (IR on)	1.0 Lux (Color) 0.0 Lux (IR LED on)	1.0 Lux (Color) 0.0 Lux (IR LED on)	1.0 Lux (Color) 0.001 Lux (DSS on)
AGC/BLC/DNR/DWDR	Yes / Yes / Yes / Yes	Yes / Yes / Yes / Yes	Yes / Yes / Yes / Yes	Yes / Yes / Yes / Yes	Yes / Yes / Yes / Yes
Network interface	10/100 Base T	10/100 Base T	10/100 Base T	10/100 Base T	10/100 Base T
Protocols	QoS Layer 3 DiffServ, TCP/IP, UDP/IP, HTTP, HTTPS, RTSP, RTCP, RTP/UDP, RTP/TCP, mDNS, UPnP™, SMTP, DHCP, DNS, DynDNS, NTP, SNMPv1/v2c/v3(MIB-II), IGMP, ICMP, SSLv2/v3, TLSv1, Onvif				
Remote access	IE 7.0+	IE 7.0+	IE 7.0+	IE 7.0+	IE 7.0+
Micro SD Storage	SD/SDHC/SDXC supported (Card not included)				
Motion detection	Yes	Yes	Yes	Yes	Yes
Power source	12VDC	12VDC	12VDC	12VDC	12VDC
PoE	Support (IEEE 802.3af)		Support (IEEE 802.3af)		
Power consumption	2.64W @ 12VDC	5.6W @ 12VDV	1.4A@12VDC (Heater & IR)	16.2W@12VDC	8.64W@12VDC
Operating environment	32°F ~ 122°F	32°F ~ 104°F	12VDC: -40°F ~ 122°F PoE: 32°F ~ 122°F	12VDC: -40°F ~ 122°F PoE: 32°F ~ 122°F	PoE: 32°F ~ 122°F
Housing/ Color / IR	Polycarbonate	Polycarbonate / 14 IR LEDs	Aluminium / IP66 / 32 Smart IR LEDs	Aluminium / IP66	Aluminium
Weight	0.7 lbs.	1 lbs.	2.6 lbs	3.5 lbs	2.6 lbs
Dimensions	3.3" ø x 3.7" H	5.8" ø x 3.9" H	4.5 ø x 5.1" H	6.5"ø x 5.3" H	6.1"ø x 5.1"H
Certifications	ONVIF (Profile S and G), FCC, CE			ONVIF (Profile S and G), FCC, CE, IP66	ONVIF (Profile S and G), FCC, CE

See page 9 for mounting accessories

See page 15 for GXi License List



OUTDOOR PTZ DOME with GXi IMBEDDED INTELLIGENCE



OUTDOOR PTZ		
ZN1-P4DT54		
Sensor	1/2.8" 1080p Exmor CMOS	
Compression format	H.264, MPEG-4, MJPEG	
Dual stream	Yes, configurable	
Resolution	1080p	
Resolution options	16:9 mode	1920 x 1080, 1280 x 720, 1120 x 630, 960 x 540, 800 x 450, 640 x 360, 480 x 270, 320 x 180
	4:3 mode	SXGA (1280x960), XGA(1024x768), SVGA (800x600), PAL (720x576), NTSC (720x480), VGA (620x480), QVGA (320x240)
Compression FPS	30fps@ 1080p	
Lens	4.3 (w) – 129.0mm (t), F1.6 (w) – F4.7 (t) Optical 30x, Digital 12x	
Horizontal FOV	Horizontal: Approx. 63.7°(Wide) to 2.3°(Tele)	
Day/Night Performance	True Day / Night	
WDR Performance	Digital	
Minimum illumination	Color: 1.4 Lux (50 IRE) / 0.35 Lux (Sens-up) B/W : 0.05 Lux (50 IRE) / 0.013 Lux (Sens-up)	
Audio in-/output	1 / 1	
Audio codec	G.711-uLaw	
Network interface	10 / 100 Base-T	
Protocols	QoS Layer 3 DiffServ, TCP/IP, UDP/IP, HTTP, HTTPS, FTP, RTSP, RTCP, RTP/UDP, RTP/TCP, mDNS, UPnP™, SMTP, DHCP, DNS, DynDNS, NTP, SNMPv1/v2c/v3(MIB-II), IGMP, ICMP, SSLv2/v3, TLSv1, SRTP, RTMP	
Pan /Tilt Range	Pan Range: 360° Endless Rotation, Tilt Range: -5° ~ 185° Auto-flip	
Manual Pan/Tilt Speed	0.01° ~ 120° /sec	
Preset Pan/Tilt Speed	600° /sec	
Presets	255 preset points; 6 tours; Auto panning; Auto run	
Privacy Zone	8 configurable regions	
Interfaces	4x Digital-In, 2x Digital-Out	
Micro SD Storage	SD/SDHC/SDXC supported: up to 32GB (card not included)	
Power source	AC 24V, PoE	
Power consumption	24VAC, PoE+(802.3at) / 46W (heater on) @ 24VAC	
Operating conditions	24VAC -40°F ~ 122°F (-40°C ~ 50°C); PoE+ 32°F ~ 122°F (0°C ~ 50°C); Built-in fan and heater	
Housing / IP Rating	Aluminum, Anti-vandal bubble (PC) / IP66	
Weight	10.1 lb / 4.6kg	
Dimensions	9.1" ø x 11.7"H / 232mm ø x 296.4 H	
Certifications	ONVIF (Profile S and G), FCC, CE, IP66	

OUTDOOR PTZ MOUNTING ACCESSORIES

WMB-4600

Wall Mount Bracket for ZN1-P4DT54



CMB-4600

Ceiling Mount Bracket for ZN1-P4DT54



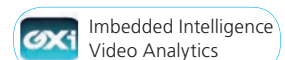
PMA-4600

Pole Mount Adaptor for ZN1-P4DT54



CMA-4600

Corner Mount Adaptor for ZN1-P4DT54



See page 15 for GXi License List

MINI & BULLET CAMERAS with GXi IMBEDDED INTELLIGENCE



	INDOOR WIRELESS CUBE	INDOOR MINI DOME	OUTDOOR MINI BULLET	OUTDOOR MINI BULLET	OUTDOOR BULLET
	ZN1-Q3FN2	ZN1-M4FN3	ZN1-N4NFN6	ZN1-B4NMZ56	ZN-BT662XE-MIR
Sensor	1/4" CMOS	1/2.7" CMOS	1/2.9" CMOS	1/2.9" CMOS	1/2.7" CMOS
Compression format	H.264, MJPEG	H.264, MJPEG	H.264, MJPEG	H.264, MJPEG	H.264, MJPEG
Max. resolution	720p	1080p	1080p	1080p	1080p
Effective pixels	1280 x 720	1920 x 1080	1920 x 1080	1920 x 1080	1920 x 1080
Compression FPS	30fps@HD 720p	30fps@HD 1080p	30fps@HD 1080p	30fps@HD 1080p	30fps@HD 1080p
Lens	2.7mm, F2.0	2.8mm, F2.0	4.3mm, F2.0	2.8-12mm F1.4 w/ ProSet Motorized Focus & Zoom	3- 9mm, F1.4 w/ ProSet Motorized Focus & Zoom
Horizontal FOV	91°	110°	74.4°	110° (Wide) to 35.5° (Tele)	93° (Wide) to 31.7° (Tele)
Iris control	-	-	-	DC-Iris	DC-Iris
S/N ratio	50dB or more	50dB or more	50dB or more	50dB or more	60dB
Video output	-	-	-	1 x BNC (for installation)	1 x BNC (for installation)
Alarm in-/output	1 / 1	-	-	1 / 1	1 / 1
Audio in-/output	1 / 1	-	-	-	1 / 1
Audio codec	G.711	-	-	-	G.711
Day/Night Performance	Digital Day/Night	Digital Day/Night	True Day/Night	True Day/Night	True Day/Night
Minimum illumination	0.8 Lux (Color) 0.1 Lux (B/W, DSS on)	1.0 Lux (Color) 0.001 Lux (B/W, DSS on)	1.0 Lux (Color) 0.007 Lux (Sens-up)	1.0 lux (Color) 0 lux (B/W, IR on)	0.5 Lux (Color) 0 Lux (B/W, IR on)
AGC/BLC/DNR/DWDR	Yes / Yes / Yes / Yes	Yes / Yes / Yes / Yes	Yes / Yes / Yes / Yes	Yes / Yes / Yes / Yes	Yes / Yes / Yes / Yes
Network interface	10/100 Base T	10/100 Base T	10/100 Base T	10/100 Base T	10/100 Base T
Protocols	TCP/IP, UDP/IP, HTTP, RTSP, RTCP, RTP/UDP, RTP/TCP, SNTP, mDNS, UPnP, SMTP, SOCK, IGMP, DHCP, DDNS, SSL v2/v3, IEEE 802.1X, SSH, SNMP v2/v3				
Remote access	IE 7.0+	IE 7.0+	IE 7.0+	IE 7.0+	IE 7.0+
Micro SD Storage	SD/SDHC/SDXC supported (card not included)				
Motion detection	Yes	Yes	Yes	Yes	Yes
Power source	12VDC	PoE	PoE	12VDC	12VDC
PoE	-	Support (IEEE 802.3af)			
Power consumption	max. 280 mA @ 12VDC	max. 2.4W @ PoE	max. 5.55W @ PoE	max. 5.55W @ PoE	max. 1.5A@12VDC (heater on)
Operating environment	32°F ~ 104°F	32°F ~ 104°F	-4°F ~ 113°F	-4°F ~ 113°F	12VDC: -40 °F ~ 122 °F PoE: 32 °F ~ 122 °F
Housing / Rating / IR	Polycarbonate	Polycarbonate	Aluminium / IP66 / 8 LEDs	Aluminium / IP66 / 8 LEDs	Aluminium / IP66 / 34 LEDs
Weight	0.31 lbs.	0.6 lbs.	1.3 lbs	1.3 lbs.	3.3 lbs.
Dimensions	3"W x 4.4"H x 1.4"D (w/o stand)	4.2" D x 2.2"H	2.9" W x 3" H x 9.6"D (with bracket)	2.9" W x 3" H x 9.6"D (with bracket)	3.3"W x 3.2"H x 7.6"D (w/o bracket)
Certifications	ONVIF (Profile S and G), FCC, CE		ONVIF (Profile S and G), FCC, CE, IP66		

INDOOR & OUTDOOR DOME MOUNTING ACCESSORIES



**INDOOR DOME
ZN-DN312XE-M**



**OUTDOOR DOME
ZN-DNT352XE**



**OUTDOOR DOME
ZN-DNT352XE-MIR**



WMB-3000	CMB-3000	CMA-3000	PMA-3000	FMB-3102/ FMB-3502
Wall Mount for ZN-DN312XE-M, ZN-DNT352XE, ZN-DNT352XE-MIR	Ceiling Mount for ZN-DN312XE-M, ZN-DNT352XE, ZN-DNT352XE-MIR	Corner Mount for WMB-3000	Pole Mount Adaptor for WMB-3000	Flush Mount Bracket for ZN-DN312XE ZN-DNT352XE



**INDOOR DOME
ZN1-D4FN5**



WMB-3200	CMB-3200
Wall Mount for ZN1-D4FN5	Ceiling Mount for ZN1-D4FN5



**INDOOR MINI DOME
ZN1-M4FN3**



PMC-300	WMB-3200
Pendant Mount for ZN1-M4FN3	Wall Mount for ZN1-M4FN3



**INDOOR DOME
ZN1-D4NMZ43L**

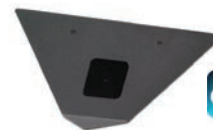


WMB-3400	CMB-3400
Wall Mount for ZN1-D4NMZ43L	Ceiling Mount for ZN1-D4NMZ43L

PINHOLE SERIES with GXi IMBEDDED INTELLIGENCE

GANZ
PixelPro

WITH **GXi**
TECHNOLOGY



	PINHOLE CAMERA		HEIGHT STRIP CAMERA		IN-WALL CAMERA		CORNER MOUNT CAMERA	
	ZN1-V4FN3	ZN1-V4FN4	HSx-H28-4	HSx-H37-4	GBK-28-4	GBK-37-4	CMC-28-4	CMC-37-4
Sensor	1/3" CMOS		1/3" CMOS		1/3" CMOS		1/3" CMOS	
Compression format	H.264, MJPEG		H.264, MJPEG		H.264, MJPEG		H.264, MJPEG	
Max. resolution	1080p		1080p		1080p		1080p	
Effective pixels	1920 x 1080		1920 x 1080		1920 x 1080		1920 x 1080	
Compression FPS	30fps@ HD 1080p		30fps@ HD 1080p		30fps@ HD 1080p		30fps@ HD 1080p	
Lens	2.8mm, F2.0	3.7mm, F2.5	2.8mm, F2.0	3.7mm, F2.5	2.8mm, F2.0	3.7mm, F2.5	2.8mm, F2.0	3.7mm, F2.5
Horizontal FOV	82°	63°	82°	63°	82°	63°	82°	63°
Iris control	-		-		-		-	
S/N ratio	50dB or more		50dB or more		50dB or more		50dB or more	
Video output	-		-		-		-	
Alarm input / Output	-		-		-		-	
Audio input / Output	-		-		-		-	
Audio codec	-		-		-		-	
Day/Night Performance	Digital D/N		Digital D/N		Digital D/N		Digital D/N	
Minimum illumination	Color: 1.0 lux / BW: 0.007 lux (DSS ON)	Color: 1.4 lux / BW: 0.01 lux (DSS ON)	Color: 1.0 lux / BW: 0.007 lux (DSS ON)	Color: 1.4 lux / BW: 0.01 lux (DSS ON)	Color: 1.0 lux / BW: 0.007 lux (DSS ON)	Color: 1.4 lux / BW: 0.01 lux (DSS ON)	Color: 1.0 lux / BW: 0.007 lux (DSS ON)	Color: 1.4 lux / BW: 0.01 lux (DSS ON)
AGC/BLC/DNR/DWDR	Yes / Yes / Yes / Yes							
Network interface	10/100 Base T		10/100 Base T		10/100 Base T		10/100 Base T	
Protocols	TCP/IP, UDP/IP, HTTP, RTSP, RTP, RTP/UDP, RTP/TCP, SNMP, mDNS, UPnP, SMTP, SOCK, IGMP, DHCP, DDNS, SSL v2/v3, IEEE 802.1X, SSH, SNMP v2/v3							
Remote access	IE 7.0+		IE 7.0+		IE 7.0+		IE 7.0+	
Micro SD Storage	SD/SDHC/SDXC supported (card not included)							
Motion detection	Yes		Yes		Yes		Yes	
Power source	12VDC		12VDC		12VDC		12VDC	
PoE	Support (IEEE 802.3af)		Support (IEEE 802.3af)		Support (IEEE 802.3af)		Support (IEEE 802.3af)	
Power consumption	max. 3.6W@12VDC		max. 3.6W@12VDC		max. 3.6W@12VDC		max. 3.6W@12VDC	
Operating environment	32°F ~ 122°F		32°F ~ 122°F		32°F ~ 122°F		32°F ~ 122°F	
Housing / Colors	Polycarbonate.		Polycarbonate. (x = W - white, S - silver, B - black)		Aluminum. White, silver & ivory faceplates included		Aluminum. Black faceplate.	
Weight	0.6 lbs		2.6 lbs		0.7 lbs		1.6 lbs.	
Dimensions	Camera unit: 1.1"ø x 1" H Camera control unit: 4.2" W x 1"H x 4.9"D		Height strip: 1.7" W x 1.4" D x 34.1" H, Camera control unit: 4.2" W x 1" H x 4.9"		Faceplate: 4.5" H x 2.8" W x 1.6" D, Main Camera control unit: 4.2" W x 1"H x 4.9" D		Corner mount: 5.5" H x 9.4" W x 4.6" D Camera control unit: 4.2" W x 1"H x 4.9"D	
Certifications	OnVIF (Profile S and G), FCC, CE							

PINHOLE SERIES with GXi IMBEDDED INTELLIGENCE

GANZ
PixelPro
WITH **GXi**
TECHNOLOGY

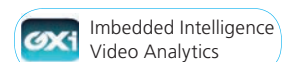


DOOR FRAME CAMERA		
	DFx-28-4	DFx-37-4
Sensor	1/3" CMOS	
Compression format	H.264, MJPEG	
Max. resolution	1080p	
Effective pixels	1920 x 1080	
Compression FPS	30fps@ HD 1080p	
Lens	2.8mm, F2.0	3.7mm, F2.5
Horizontal FOV	82°	63°
Iris control	-	
S/N ratio	50dB or more	
Video output	-	
Alarm in-/output	-	
Audio in-/output	-	
Audio codec	-	
Day/Night Performance	Digital D/N	
Minimum illumination	Color: 1.0 lux / BW: 0.007 lux (DSS ON)	Color: 1.4 lux / BW: 0.01 lux (DSS ON)
AGC/BLC/DNR/DWDR	Yes / Yes / Yes / Yes	
Network interface	10/100 Base T	
Protocols	TCP/IP, UDP/IP, HTTP, RTSP, RTCP, RTP/ UDP, RTP/TCP, SNMP, mDNS, UPnP, SMTP, SOCK, IGMP, DHCP, DDNS, SSL v2/v3, IEEE 802.1X, SSH, SNMP v2/v3	
Remote access	IE 7.0+	
Micro SD Storage	SD/SDHC/SDXC supported (card not included)	
Motion detection	Yes	
Power source	12VDC	
PoE	Support (IEEE 802.3af)	
Power consumption	Max. 3.6W@12VDC	
Operating environment	32°F ~ 122°F	
Housing / Colors	Polycarbonate. (x = W - white, S - silver, B - black)	
Weight	0.6 lbs	
Dimensions W x H x D	Camera: 1.7"x 4"x 1.4" Camera control unit: 4.2"x 1"x 4.9"	
Certifications	OnVIF (Profile S and G), FCC, CE	

ENCODERS with GXi IMBEDDED INTELLIGENCE



ENCODER	
	ZS1-1DS
Compression format	H.264, MJPEG
Resolution options	D1 / 4CIF / VGA / CIF / QVGA / QCIF
Video framerate	30fps @ D1
Video input	1 x BNC
Video output	1 x BNC
Digital in-/output	2 / 2
Audio in-/output	1 / 1
Audio codec	G.711
RS485	Yes
RS232	Yes
USB 2.0	-
Micro SD Storage	SD/SDHC/SDXC supported (card not included)
Network interface	10/100 Base-T
Dualstream	Yes
Protocols	QoS Layer 3 DiffServ, TCP/IP, UDP/IP, HTTP, RTSP, RTCP, RTP/UDP, RTP/TCP, mDNS, UPnP™, SMTP, DHCP, DNS, DynDNS, NTP, SNMPv1/v2c/ v3 (MIB-II), IGMP, ICMP, SSLv2/v3, TLSv1
Motion detection	Yes
Power source	12VDC
PoE	Support (IEEE 802.3af)
Power consumption	235mA@12VDC
Operating environment	32°F ~ 122°F
Housing material	Metal
Weight	.9 lbs.
Dimensions	4.1" W x 1.5" H x 5.6" D
Certifications	OnVIF (Profile S and G), CE, FCC



See page 15 for GXi License List

THERMAL IMAGING IP CAMERA with GXi IMBEDDED INTELLIGENCE



Models

GANZ THERMAL - G2 FIXED 320X240	
ZNT1-HET14G20A	Fixed Thermal, 17um, 50 NETD, 320x240 resolution, 30 fps, 42 degree HFOV, NTSC/PAL, VCA
ZNT1-HET14G29A	Fixed Thermal, 17um, 50 NETD, 320x240 resolution, 30 fps, 24 degree HFOV, NTSC/PAL, VCA
ZNT1-HET14G25A	Fixed Thermal, 17um, 50 NETD, 320x240 resolution, 30 fps, 9 degree HFOV, NTSC/PAL, VCA
ZNT1-HBT14G20A	Fixed Thermal, 17um, 50 NETD, 320x240 resolution, 9 fps, 42 degree HFOV, NTSC/PAL, VCA
ZNT1-HBT14G29A	Fixed Thermal, 17um, 50 NETD, 320x240 resolution, 9 fps, 24 degree HFOV, NTSC/PAL, VCA
ZNT1-HBT14G25A	Fixed Thermal, 17um, 50 NETD, 320x240 resolution, 9 fps, 9 degree HFOV, NTSC/PAL, VCA
GANZ THERMAL - G2 FIXED 640X480	
ZNT1-HAT24G35A	Fixed Thermal, 17um, 50 NETD, 640x480 resolution, 30 fps, 50 degree HFOV, NTSC/PAL, VCA
ZNT1-HAT24G22A	Fixed Thermal, 17um, 50 NETD, 640x480 resolution, 30 fps, 37 degree HFOV, NTSC/PAL, VCA
ZNT1-HAT24G25A	Fixed Thermal, 17um, 50 NETD, 640x480 resolution, 30 fps, 18 degree HFOV, NTSC/PAL, VCA
ZNT1-HBT24G35A	Fixed Thermal, 17um, 50 NETD, 640x480 resolution, 9 fps, 50 degree HFOV, NTSC/PAL, VCA
ZNT1-HBT24G22A	Fixed Thermal, 17um, 50 NETD, 640x480 resolution, 9 fps, 37 degree HFOV, NTSC/PAL, VCA
ZNT1-HBT24G25A	Fixed Thermal, 17um, 50 NETD, 640x480 resolution, 9 fps, 18 degree HFOV, NTSC/PAL, VCA

GANZ THERMAL - G2 SPECIFICATIONS		
Camera Module (Pixel Array)	Resolution	320x240, 640x480
	Detection Type	Uncooled Vanadium Oxide Microbolometer
	Sensor Pixel Size	17 μm
	Spectral Response	8-14 μm
	Sensitivity (NETD)	< 50 mK at f/1.0
	Lens (FOV)	9°, 24°, 42°, 18°, 37°, 50° - Inquire for additional options
	Scanning System	Progressive Scan
Video	Video Compression	H.264 Baseline, Main, High profile (MPEG-4 Part 10/ AVC), MJPEG (Motion JPEG)
	Video Streaming	Dual Stream, Configurable streams in H.264, MJPEG H.264: Controllable frame rate, bandwidth (VBR/CBR) MJPEG: Controllable frame rate, JPEG quality
	Resolutions	640x480 (VGA, Scaled-up), 320x240 (QVGA), 160x120 (QQVGA)
Audio	IP	IPv4, IPv6
	Protocol	QoS Layer 3 DiffServ, TCP/IP, UDP/IP, HTTP, HTTPS, FTP, RTSP, RTCP, RTP/UDP, RTP/TCP, mDNS, UPnP™, SMTP, DHCP, DNS, DynDNS, NTP, SNMP v2c/v3 (MIB-II), IGMP, ICMP, SSLv2/v3, TLS, SRTP, RTMP, IEEE802.1X (EAP-TLS / EAP-PEAP)
	Security	HTTPS (SSL), SRTP, IP Filtering, Multi-level access with password protection
	Users	Live viewing for up to 10 clients
Integration	Application Programming Interface	Software Development Kit (SDK) available
	ONVIF Compliance	Profile S, Profile G
	Event Sources	Sensor (DI); Alarm (DO); Video Motion Detection; Tamper Detection; Video Content Analytics (VCA); Network Loss/Detect; Network Setting Change; Time (Recurrence / Schedule); Storage Error
	Event Actions	File upload: E-mail, FTP. Notification: E-mail, FTP, HTTP, TCP (push, multicast, TCP event server). Active alarm (DO) Recording. Event Log Saving.
	Event Metadata Streaming (RTSP / RTP)	Video Motion Detection (MD); Video Content Analytics / GXi Imbedded Intelligence

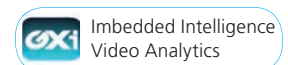
THERMAL IMAGING IP CAMERA with GXi IMBEDDED INTELLIGENCE

GANZ G2
THERMAL



GANZ THERMAL - G2 SPECIFICATIONS (CONTINUED)

Edge Storage	Storage	Embedded Micro SDHC Card (Optional)
	Recording Types	Continuous Recording or Event Recording
	Continuous Recording	Instant recording; Search & Download
	Event Recording	Search of Event Logs; Playback; Download
GXi Imbedded Intelligence (Standard)	High Performance	Advanced tracking algorithm, low false alarm rate
	Easy to Use	Intuitive web browser interface
	Detection Zones	Multi-segment polygons and lines
	On-screen Display	Real-time display of tracking data and events
	Tamper Detection	Detect camera tampering
	Presence Filter	Detect presence of an object
	Detection Behavior	Direction and Dwell filters
GXi Imbedded Intelligence (Optional)	3D Behavior	Perspective corrected size, speed filters and calibration
	Detection Behavior	Enter, Exit, Appear, Disappear, Stop, Tailgating filters
	Logical Rules	Extends standard rules to allow various combinations of the inputs
	Counting Line	High accuracy people and vehicle counting
	Counter	20 counters in total
	Counting Report	Generates counter reports based on the counter database
Physical	Meta Data	Plain XML Format
	Material	Poly-carbonate, Aluminum
	External I/O Terminals	1x Alarm In, 1x Alarm Out, RS-485
	Language on Webpage	English, Chinese, Korean
	Power Source/ Consumption	12VDC, 24VAC, PoE /max 10W@12VDC, 24VAC, PoE
	Operating Conditions	-40°F ~ 140°F (-40°C ~ 60°C) Humidity up to 85% RH (non-condensing)
	Weight	Approx. 2.7 lbs (1.2kg)
	Dimensions (H x V x D)	3.7" x 3.9" x 11.5" (95 x 98 x 293 mm)
Certifications	FCC, CE, IP66, UL (all in progress) OnVIF (Profile S and G)	



See page 15 for GXi License List

See GXi license list on page 14 for more details.

9 Hz models are export controlled by the U.S. Department of Commerce under ECCN 6A993. 30 Hz models are export controlled by the U.S. Department of Commerce under ECCN 6A003b.4.b. The commodities described herein may require U.S. Government authorization prior to export or re-export.

Made in the USA.

Imbedded Intelligence Content Analytics



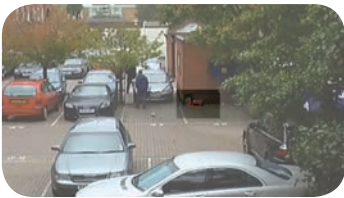
Intrusion Detection

For perimeter security and crime prevention cameras can be used as intrusion detection sensor. An alarm is generated when a pre-determined object (person or vehicle) crosses into the detection zone. Equally, an alarm is generated when an object crosses from the inside to the outside of a detection zone.



People and Vehicle Counting

This feature counts the people and vehicles that pass through the setup “lines” with precision. It recognizes directions, so it can differentiate whether they are entering or exiting. It can also measure the speed of the objects. This feature is ideal for retail: counting customers, identifying trends and alerting staff when a group gathers in a defined location..



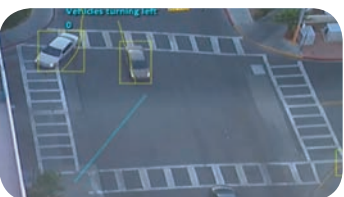
Abandoned & Removed Object Detection

Objects abandoned in a pre-defined zone it will trigger an alarm (a bag or suitcase left on the street or public transit). Objects are detected and trigger an alarm when carried into a pre-defined zone. Applications include detection of suspicious objects and clarification of inventory losses.



Stopping and Dwell Detection

Objects that are stopped inside a zone, or remain inside a zone for longer than the defined amount of time will trigger an alarm. Ideal for identifying a loitering person.



Directional Detection

Objects that travel in the configured direction (within the limits of the acceptance angle) through a zone or over a line trigger an alarm. This can be used for traffic control and entry/exit monitoring.



Tailgating Detection

Object tailgating is defined as two objects crossing a virtual line or zone within in a pre-defined time frame. This is suitable for vehicles or with people in an access control setting.

These examples represent only a few of the ways GXi's Imbedded Intelligence enables you to capture the real-time data needed to protect your business.

GXI IMBEDDED INTELLIGENCE LICENSE LIST



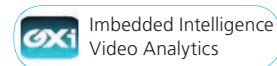
Camera & Encoder Functions	Pre-Installed Licenses			Advanced Functions*											
				Surveillance*								Counting*		Tracking*	
	Number of Detection Zones	Tamper Detect	Presence (Intelligent Motion Sensor)	Enter/Exit	Appear/Disappear	Stopped	Dwell	Direction Filter	Speed Filter	Tailgating	Abandoned and Removed	Color Filter	On-screen Counting	Counting Line	PTZ Autotracking
1080p Cameras ZN-xxXE Series / ZN1-xx	40	●	●	●	●	●	●	●	●	●	—	●	●	●	●**
Thermal Cameras ZNT1-H Series	40	●	●	●	●	●	●	●	●	●	—	—	●	●	—
Video Encoder ZS1 Series	Optional	Optional	Optional	●	●	●	●	●	●	●	—	●	●	●	—

*Requires license to activate functions (see table below)

**Pre-installed in PTZ camera

GX Imbedded Intelligence Features	Free Licenses			Advanced Functions											
				Surveillance								Counting		Tracking	
	Number of Detection Zones	Tamper Detect	Presence (Intelligent Motion Sensor)	Enter/Exit	Appear/Disappear	Stopped	Dwell	Direction Filter	Speed Filter	Tailgating	Abandoned and Removed	Color Filter	On-screen Counting	Counting Line	PTZ Autotracking
ZNS-PRES-1	40	●	●	—	—	—	—	—	—	—	—	—	—	—	—
ZNS-COUNT-1	40	●	—	—	—	—	—	—	—	—	—	●	●	—	—
ZNS-ACCESS-1	40	●	●	—	—	—	—	—	●	—	—	●	●	—	—
ZNS-DETECT-1	40	●	●	—	—	—	●	●	●	—	—	—	—	—	—
ZNS-FOLLOW-1	40	●	—	—	—	—	—	—	—	—	—	—	—	—	●
ZNS-SURV-1	40	●	●	●	●	●	●	●	●	●	—	—	●	—	—
ZNS-PRO-1	40	●	●	●	●	●	●	●	●	●	—	●*	●	●	—
ZNS-ADVANCED-1	40	●	●	●	●	●	●	●	●	●	—	—	●	●	—
ZNS-TRACK-1	40	●	●	●	●	●	●	●	●	●	—	—	●	—	●

ZN-STB-1 - Embedded Video Stabilization



* Not supported on ZNT1-H Series Thermal Cameras

3 AND 5 MEGAPIXEL BULLET AND BOX CAMERAS

GANZ
PixeIPro



	3 MEGAPIXEL BULLET	5 MEGAPIXEL BULLET	5 MEGAPIXEL BOX CAMERA
	ZN-B5DMP58HE	ZN-B6DMP55HE	ZN-C6DHE
Sensor	1/2.8" Sony ExmorR CMOS	1/1.8" Sony ExmorR CMOS	
Compression format	H.264, MJPEG		
Max. resolution	2048 x 1536, 30fp	2592 x 1944, 30fps	
Effective pixels	2064 x 1552 (3.20M)	2609 x 1960 (5.11M)	
Compression FPS	2048 x 1536 30fps / 1920 x 1080 60fps		2592 x 1944 30fps / 1920 x 1080 60fps
Lens	Motorized w/ P-iris f=3~10.5mm, F1.4	Motorized w/ P-iris f=3.6~10mm, F1.5	C/CS Mount
Horizontal FOV	84 ° (wide) 30° (tele)	81 ° (wide) 37° (tele)	-
Iris control	P-Iris		Manual / DC Auto Iris
S/N ratio	48 dB or more		
Video output	Composite Output(BNC), 75 ohm 1Vpp		
Alarm in-/output	1 / 1 relay		
Audio in-/output	1x Line in / 1x Line out		
Audio codec	G.711 u-law 8kHz		
Day/Night Performance	True Day Night / Removable IR Cut Filter		
WDR Performance	True WDR		
Minimum illumination	0 lux with IR LED ON		0.06 lux (F1.2 / 30IRE)
AGC/BLC/ Defog	YES		
Network interface	10BASE-T, 100BASE-TX, RJ45		
Protocols	IPv4, HTTP, SMTP, UPnP, DNS, RTSP, DDNS, RTP, TCP, UDP, RTCP, DHCP, ARP, FTP, IGMP, ICMP, NTP		
Alarm Trigger	E-mail notification (Snapshot), FTP transfer (Snapshot), External Alarm Out		
Event functions	VMD, External Alarm input		
Micro SD Storage	SD/SDHC/SDXC supported up to 32GB (card not included)		
Motion detection	User set 4 ROI (Region Of Interest), 30 Step Sensitivity		
Power source	12VDC / 24VAC		
PoE	IEEE 802.3af Class3		
Power consumption	855mA @ 12VDC, 10.3W /870mA @ 24VAC, 12.9W /250mA @ PoE, 12W	890mA @ 12VDC, 10.8W /900mA @ 24VAC, 13.3W /260mA @ PoE, 12.5W	372mA @ 12VDC, 4.5W /196mA @ 24VAC, 4.7W /94.4mA @ PoE, 4.5W
Operating environment	-40°C ~ 50°C (-40°F~122°F)		0°C ~ 40°C (32°F~104°F)
Heater	3W ceramic heater		-
Fan	1		-
IR LEDs	42 IR LEDs		-
Weight	3.2 lb / 1.44kg		0.7 lb / 316g
Dimensions	3.3" x 11.4" (L), Bracket: 4.8" ø / 82.5 ø x 290mm (L), Bracket:123mm		2.5" (W) x 2.4" (D) x 4.8" (L) 64.6 (W) x 60.3 (D) x 122.4 (L) mm
Certifications	OnVIF (Profile S), IP66		OnVIF (Profile S)

3 AND 5 MEGAPIXEL WDR DOMES




	INDOOR DOME	INDOOR DOME	OUTDOOR DOME	OUTDOOR DOME
	ZN-D5DMP58LHE	ZN-D6DMP55LHE	ZN-D5DTMP58LHE	ZN-D6DTMP55LHE
Sensor	1/2.8" Sony ExmorR CMOS	1/1.8" Sony ExmorR CMOS	1/2.8" Sony ExmorR CMOS	1/1.8" Sony ExmorR CMOS
Compression format	H.264, MJPEG			
Max. resolution	3MP	5MP	3MP	5MP
Effective pixels	2064 x 1552 (3.20M)	2609 x 1960 (5.11M)	2064 x 1552 (3.20M)	2609 x 1960 (5.11M)
Compression FPS				
Lens	Motorized with P-iris, 3~10.5mm, F1.4	Motorized with P-iris, 3.6~10mm, F1.5	Motorized with P-iris, 3~10.5mm, F1.4	Motorized with P-iris, 3.6~10mm, F1.5
Horizontal FOV	84° (wide), 30° (tele)	81° (wide), 37° (tele)	84° (wide), 30° (tele)	84° (wide), 30° (tele)
Iris control	P-iris			
S/N ratio	48 dB or more			
Video output	Composite Output (BNC), 75 ohm 1Vpp			
Alarm in-/output	1 / 1 relay			
Audio in-/output	1x Line in /1x Line out			
Audio codec	G.711 u-law 8kHz			
Day/Night Performance	True Day / Night			
WDR	True WDR			
S/N Ratio	48 dB or more			
Minimum illumination	0 lux with IR LED ON			
AGC/BLC/ Defog	yes			
Network interface	10BASE-T, 100BASE-TX, RJ45			
Protocols	IPv4, HTTP, SMTP, UPnP, DNS, RTSP, DDNS, RTP, TCP, UDP, RTCP, DHCP, ARP, FTP, IGMP, ICMP, NTP			
Alarm Trigger	VMD, External Alarm input			
Event functions	E-mail notification (Snapshot), FTP transfer(Snapshot), External Alarm Out			
Micro SD Storage	SD/SDHC/SDXC supported up to 32GB (card not included)			
Motion detection	User set 4 ROI(Region Of Interest), 30 Step Sensitivity			
Power source	12VDC / 24 VAC			
PoE	IEEE 802.3af Class3			
Power consumption	710mA @ 12VDC, 8.6W, 570mA @ 24VAC, 8.1W, 160mA @ PoE, 7.7W	730mA @ 12VDC, 8.8W, 600mA @ 24VAC, 8.5W, 160mA @ PoE, 7.7W	830mA @ 12VDC, 9.9W, 830mA @ 24VAC, 12.5W, 242mA @ PoE, 11.6W	850mA @ 12VDC, 10.2W, 880mA @ 24VAC, 13.2W, 250mA @ PoE, 12W
Operating environment	32°F~104°F / 0°C ~ 40°C		-40°F~-122°F / -40°C ~ 50°C	
Heater	-		yes	
IR LEDs	Smart IR, 18 pieces, Auto / Off			
Weight	1.2 lb / 554g		2.7 lb 1.21kg	
Dimensions	5.9 ø x 3.9 H / 151mm ø x 100mm (H)		5.3" ø x 5.7" (H) / 135mm ø x 145mm (H)	
Certifications	CE, FCC, OnVIF (S)	CE, FCC, OnVIF (S)	IP66, CE, FCC, OnVIF (S)	IP66, CE, FCC, OnVIF (S)

INDOOR DOMES



720p INDOOR DOMES		1080p INDOOR DOMES		
	ZN-D1MTP	ZN-D1MTP-IR	ZN-D2MTP	ZN-D2MTP-IR
Sensor	1/2.8" SONY CMOS Sensor IMX-122		1/2.8" SONY CMOS Sensor IMX-122	
Compression format	H.264, MJPEG		H.264, MJPEG	
Max. resolution	720p		1080p	
Effective pixels	1984x1225		1984x1225	
Compression FPS	1fps ~ 30fps		1fps ~ 30fps	
Lens	3.0mm - 9.0mm, F1.2 with ProSet Motorized Focus & Zoom			
Horizontal FOV	90° ~ 31.8°			
Iris control	P-Iris		P-Iris	
S/N ratio	>48.8dB		>48.8dB	
Video output				
Alarm in-/output	1x Alarm In, 1x Alarm Out		1x Alarm In, 1x Alarm Out	
Audio in-/output	1x Audio In, 1x Audio Out		1x Audio In, 1x Audio Out	
Audio codec	G.711		G.711	
Day/Night Performance	True Day/Night		True Day/Night	
Minimum illumination	Color: 0.21 lux (F1.2, 50IRE), B/W: 0.06 lux (F1.2, slow shutter on, 50IRE)	Color: 0.21 lux (F1.2, 50IRE), B/W: 0 lux (IR on)	Color: 0.21 lux (F1.2, 50IRE) B/W: 0.06 lux	Color: 0.21 lux (F1.2, 50IRE) B/W: 0 lux (IR on)
AGC/BLC	Yes / Yes		Yes / Yes	
Network interface	10BASE-T, 100BASE-TX, RJ45		10BASE-T, 100BASE-TX, RJ45	
Protocols	IPv4, HTTP, HTTPS, SMTP, UPnP, DNS, DynamicDNS, NTP, RTSP, RTP, TCP, UDP, IGMP, RTCP, ICMP, DHCP, ARP			
Security	Password protection, HTTPS, IP-Address filtering			
Event functions	E-Mail-Notification (snapshot), FTP-Transfer (snapshot), Videostream with alarm status			
Remote access	Internet Explorer 7.0+, Firefox, Chrome, Smartphone			
Micro SD Storage	-		-	
Motion detection	4 regions, 10 sensitivity steps			
Power source	12VDC, 24VAC (50Hz/60Hz), UL Listed		12VDC, 24VAC (50Hz/60Hz), UL Listed	
PoE	Support (IEEE 802.3af)		Support (IEEE 802.3af)	
Power consumption	12VDC max. 630mA, 7.6W / 24VAC max 500mA, 7.5W / PoE max. 150mA, 12VDC max. 500mA, PoE 140mA / Max 6.7W (IEEE 802.3af compliant)			
Operating environment	32°F ~ 104°F		32°F ~ 104°F	
Housing / IR LED	Polycarbonate	Polycarbonate /18 IR LEDs	Polycarbonate	Polycarbonate /18 IR LEDs
Weight	0.9 lbs.		0.9 lbs.	
Dimensions	4.5" (H) x 4.9"Ø / 113mm (H) x 124.7mm Ø			
Certifications	ONVIF (Profile S), CE, FCC, WEEE, UL Listed			

See page 20 for mounting accessories

OUTDOOR DOMES

GANZ PixeIPro



720p OUTDOOR DOMES		1080p OUTDOOR DOMES		
	ZN-DT1MTP	ZN-DT1MTP-IR	ZN-DT2MTP	ZN-DT2MTP-IR
Sensor	1/2.8" SONY CMOS Sensor		1/2.8" SONY CMOS Sensor	
Compression format	H.264, MJPEG		H.264, MJPEG	
Max. resolution	720p		1080p	
Effective pixels	1280 x 1024		1984 x 1225	
Compression FPS	1fps ~ 30fps		1 fps ~ 30fps	
Lens	3.0mm - 9.0mm, F1.2 with ProSet		3.0mm - 9.0mm, F1.2 with ProSet	
Horizontal FOV	90° ~ 31.8°			
Iris control	P-Iris		P-Iris	
S/N ratio	>48.8dB		>48.8dB	
Video output				
Alarm in-/output	1 / 1		1 / 1	
Audio in-/output	1 / 1		1 / 1	
Audio codec	G.711		G.711	
Day/Night Performance	True Day/Night		True Day/Night	
Minimum illumination	Color: 0.21 lux (F1.2, 50IRE), B/W: 0.06 lux (F1.2, slow shutter on, 50IRE)	Color: 0.21 lux (F1.2, 50IRE), B/W: 0 lux (IR on)	Color: 0.21 lux (F1.2, 50IRE), B/W: 0.06 lux (F1.2, slow shutter on, 50IRE)	Color: 0.21 lux (F1.2, 50IRE), B/W: 0 lux (IR on)
AGC/BLC	Yes / Yes		Yes / Yes	
Network interface	10/100 Base T		10/100 Base T	
Protocols	IPv4, HTTP, HTTPS, SMTP, UPnP, DNS, Dynamic DNS, NTP, RTSP, RTP, TCP, UDP, IGMP, RTCP, ICMP, DHCP, ARP			
Security	Password protection, HTTPS, IP-Address filtering			
Event functions	E-Mail-Notification (snapshot), FTP-Transfer (snapshot), Videostream with alarm status			
Remote access	IE 7.0+, Firefox, Chrome, Smartphone			
Micro SD Storage	-		-	
Motion detection	4 regions, 10 sensitivity steps			
Power source	12VDC, 24VAC (50Hz/60Hz) required for heater, UL Listed			
PoE	Support (IEEE 802.3af)			
Power consumption	12VDC max. 840mA, PoE max. 110mA			
Operating environment	0°F ~ 122°F / -20°F ~ 122°F with optional heater (ZNA-HD1, VGA model / ZNA-HD2 for ZN-DT*MTP-* models)			
Housing / Color / IR	Aluminium / 18 IR LEDs (*-IR)		Aluminium / 18 IR LEDs (*-IR)	
Weight	2.4 lbs.		2.4 lbs.	
Dimensions	4.8" (H) x 5.7"Ø			
Certifications	ONVIF (Profile S), CE, FCC, WEEE, UL Listed, IP66			

See page 20 for mounting accessories

INDOOR & OUTDOOR DOME ACCESSORIES



3/5 MP OUTDOOR DOMES ZN-D5DTMP58LHE, ZN-D6DTMP55LHE



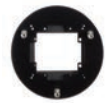
ZNA-WMB3A	ZNA-CMB3A	ZNA-ICB3A
Wall Mount Bracket for ZN-D5DTMP58LHE ZN-D6DTMP55LHE	Ceiling Mount Bracket for ZN-D5DTMP58LHE ZN-D6DTMP55LHE	Flush mount adaptor ZN-D5DTMP58LHE ZN-D6DTMP55LHE

INDOOR DOME ZN-D1MTP, ZN-D2MTP



ZC-FM3A	ZC7-PM1	ZC7-WM1
Flush Mount Adapter for ZN-D1MTP and ZN-D2MTP	Pendant Mount for ZN-D1MTP, ZN-D2MTP (3/4" NPT Pipe)	Wall Mount for ZN-D1MTP and ZN-D2MTP

OUTDOOR DOME ZN-DT1MTP, ZN-DT2MTP



ZNA-CA1	ZNA-HD2	ZNA-WM2A	ZCA-GAP
Pendant Cap for PixelPro ZN-DT1MTP, ZN-DT2MTP (1 1/4" NPT Pipe)	Heater Option for ZN-DTxMPT Series Vandal Domes	Wall Mount Adapter for PixelPro ZN-DT1MTP, ZN-DT2MTP	4S Box Adapter for ZNA-WM2A

MINI DOME, MINI BULLET & BULLET IP CAMERAS

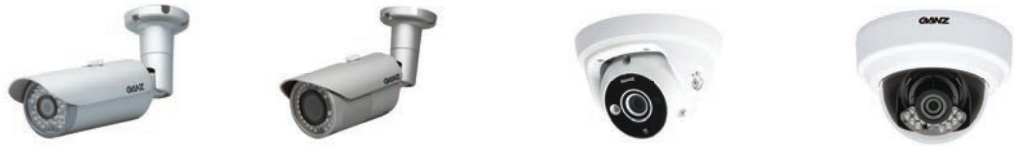
GANZ PixelPro



	INDOOR MINI DOME		OUTDOOR MINI BULLET		OUTDOOR BULLET
	ZN-MDI243M-IR	ZN-MDI260M-IR	ZN-MB243M	ZN-MB260M	ZN-B2MTP
Sensor	1/2.8" Sony Exmor CMOS		1/2.8" Progressive Scan CMOS		1/2.8" SONY CMOS Sensor IMX-122
Compression format	H.264, MJPEG		H.264, MJPEG		H.264, MJPEG
Max. resolution	1080p		1080p		1080p
Effective pixels	1984 x 1225		1984 x 1225		1984 x 1225
Compression FPS	1 fps - 30 fps		1 fps - 30 fps		30fps
Lens	4.0mm, F2.0	6.0mm, F2.0	4.0mm, F2.0	6.0mm, F2.0	3-9mm F1.2 with ProSet Motorized Focus & Zoom
Horizontal FOV	84.4°	53.3°	84.4°	53.3°	104.2° ~ 35.5°
Iris control	-		-		P-Iris
S/N ratio	50dB or more		50dB or more		>48.8dB
Video output	1x Composite Output 75Ω 1 Vpp (for installation)				
Day/Night	True Day/Night		True Day/Night		True Day/Night
Minimum illumination	0.63 lux (F2.0 / 50IRE (Color), 0 Lux (IR LED on))		0.63 lux (F2.0 / 50IRE (Color)) 0 Lux (IR LED on)		0.16 lux (F1.2, 50IRE) 0 lux (IR on)
Shutter	1/4 ~ 1/2000s		1/4 ~ 1/2000s		1/4 ~ 1/2000s
DNR	2D		2D		-
DPC	Yes		Yes		-
AGC/BLC	Yes / Yes		Yes / Yes		Yes / Yes
Network interface	10/100 Base T				10 BASE-T, 100 BASE-TX, RJ45
Protocols	IPv4, HTTP, SMTP, UPnP, DNS, Dynamic DNS, NTP, RTSP, RTP, TCP, UDP, RTCP, DHCP		IPv4, HTTP, SMTP, UPnP, DNS, RTSP, DDNS, RTP, TCP, UDP, RTCP, DHCP, ARP, NTP		IPv4, HTTP, HTTPS, SMTP, UPnP, DNS, Dynamic DNS, NTP, RTSP, RTP, TCP, UDP, IGMP, RTCP, ICMP, DHCP, ARP
Security	Password protection				Password protection, HTTPS, IP-Address filtering
Event functions	E-Mail-Notification (Snapshot), FTP-Transfer (Snapshot), Videostream with alarm status		E-Mail-Notification, FTP-Transfer, Videostream with alarm status		E-Mail-Notification, FTP-Transfer, Videostream with alarm status, Pre/Post Alarm
Remote access	IE 7.0+, Firefox, Chrome, Smartphone				
Micro SD Storage	-		-		SD/SDHC/SDXC supported (card not included)
Motion detection	4 regions, 10 sensitivity steps				User set 4 ROI (Region of Interest), 10 Step Sensitivity
PoE	Support (IEEE 802.3af)				Support (IEEE 802.3af)
Power / Power consumption	70mA, max. 3.4W / 100mA, max 4.8W (IR on)		70mA, max. 3.4W / 100mA, max 4.8W (IR on)		24VAC max.1.63A, PoE max.220mA, UL Listed
Operating environment	-14°F ~113°F		-14°F ~122°F		-14°F ~122°F / with Heater -40°F ~ 122°F
Housing / IR LED	Polycarbonate / 2 IR LEDs		Aluminium / IP66 / 18 IR LEDs		Aluminium / IP66 / 42 IR LEDs
Weight	0.7 lbs.		0.7 lbs.		4.1 lbs
Dimensions	5.1"ø x 3"H		2.3"ø x 3.3"H (without bracket)		11.7" L x 3.3 ø (camera & bracket)
Certifications	CE, FCC, WEEE, OnVIF (Profile S), UL Listed		CE, FCC, UL, WEEE, OnVIF (Profile S), IP66		CE, FCC, UL, OnVIF, WEEE, IP66, UL Listed

MINI IP CAMERA SERIES

GANZ PixelPro



	OUTDOOR MINI BULLET	OUTDOOR MINI BULLET	OUTDOOR MINI DOME	INDOOR MINI DOME
	ZN-N4NFN5 ZN-N4NFN9	ZN-N4NVD56	ZN-M4NTFN3L ZN-M4NTFN4L ZN-M4NTFN9L	ZN-M4NFN3L ZN-M4NFN9L
Sensor	1/2.9" Sony ExmorR CMOS	1/2.8" Sony Exmor CMOS	1/2.8" Sony ExmorR CMOS	1/2.9" Sony Exmor CMOS
Compression format	H.264, MJPEG			
Max. resolution	1080p	1080p	1080p	1080p
Effective pixels	1984x1105	1984x1105	1984x1105	1984x1105
Compression FPS	1 fps ~ 30 fps			
Lens	Fixed ZN-N4NFN5, 4mm F1.8 ZN-N4NFN9, 6mm, F1.8	Varifocal 2.8-12mm, F1.4 DC-Iris	Fixed ZN-M4NTFN3L, 2.8mm F1.8, ZN-M4NTFN4L, 3.6mm F1.8, ZN-M4NTFN9L, 6mm	Fixed ZN-M4NFN3L, 2.8mm F1.8, ZN-M4NFN9L, 6mm
Horizontal FOV	ZN-N4NFN5 - 81° ZN-N4NFN9 - 51°	96° (wide) 34° (tele)	ZN-M4NTFN3L, 109° ZN-M4NTFN4L, 86° ZN-M4NTFN9L, 43°	ZN-M4NFN3L - 109° ZN-M4NFN9L - 43°
Iris control	Fixed Iris	DC Iris	Fixed Iris	Fixed Iris
S/N ratio	48 dB or more			
Video output	Composite Output (BNC), 75 ohm 1Vpp			
Alarm in-/output	-	-	1/1	1
Audio in-/output	-	1 / -	-	-
Audio codec	-	G.711 u-law 8kHz	-	-
Day/Night Performance	True Day / Night			
WDR Performance	D- WDR			
Minimum illumination	0 lux with IR LED ON			
AGC/BLC/ Defog	Yes			
Network interface	10BASE-T, 100BASE-TX, RJ45			
Protocols	IPv4, HTTP, SMTP, UPnP, DNS, RTSP, DDNS, RTP, TCP, UDP, RTCP, DHCP, ARP, FTP, IGMP, ICMP, NTP			
Alarm Trigger	VMD		VMD, External Alarm Input	VMD
Event functions	E-mail notification (Snapshot), FTP transfer (Snapshot)		E-mail notification (Snapshot), FTP transfer (Snapshot), External Alarm Out	
Micro SD Storage	-	-	-	SD/SDHC/SDXC supported up to 32GB (card not included)
Motion detection	User set 4 ROI (Region Of Interest), 30 Step Sensitivity			
Power source	12VDC / 24 VDC			
PoE	IEEE 802.3af Class3			
Power consumption	710mA @ 12VDC, 8.6W, 570mA @ 24VAC, 8.1W, 160mA @ PoE, 7.7W	730mA @ 12VDC, 8.8W, 600mA @ 24VAC, 8.5W, 160mA @ PoE, 7.7W	830mA @ 12VDC, 9.9W, 830mA @ 24VAC, 12.5W, 242mA @ PoE, 11.6W	850mA @ 12VDC, 10.2W, 250mA @ PoE, 12W
Operating environment	32°F~104°F / 0°C ~ 40°C		-40°F~122°F / -40°C ~ 50°C	
Heater	-		yes	
IR LEDs	30	36	1	15
Weight	554g		1.21kg	
Dimensions	5.9" ø x 3.9" / 151mm x 100mm (H)		5.3" ø x 5.7" (H) / 135 ø x 145mm (H)	
Certifications	IP66, CE, FCC, OnVIF (Profile S)		IP66, CE, FCC, OnVIF (Profile S)	CE, FCC, OnVIF (Profile S)

GENSTAR IP CAMERA SERIES



	OUTDOOR MINI IR BULLET	OUTDOOR MINI IR BULLET	OUTDOOR MINI IR DOME	OUTDOOR 360° FISHEYE DOME
	ZN8-B4NVF56	ZN8-N4NFN4	ZN8-M4NTFN4L	ZN8-F7NTFN10L
Resolution	1080p	1080p	1080p	6MP
Image Sensor	1/3" CMOS	1/3" CMOS	1/3" CMOS	1/1.8" CMOS
Video Compression	H.264, MJPEG	H.264, MJPEG	H.264, MJPEG	H.264, MJPEG
Triple Stream	Yes, configurable	Yes, configurable	Yes, configurable	Yes, configurable
Resolution	1920x1080 @30fps	1920x1080 @30fps	1920x1080 @30fps	3072x2048 @15fps 1920x1080 @30fps
Video Frame Rate	max. 30fps Full-HD	max. 30fps Full-HD	max. 30fps Full-HD	max. 30fps Full-HD
FOV	89° - 35° FOV	75° FOV	75° FOV	360° FOV
Lens	2.8mm - 12mm	3.6mm	3.6mm	1.6mm
Day/Night Performance	True Day/Night	True Day/Night	True Day/Night	True Day/Night
Minimum illumination	0.2 Lux (Color, AGC on) 0 Lux (B/W, IR on)	0.2 Lux (Color, AGC on) 0 Lux (B/W, IR on)	0.05 Lux (Color, AGC on) 0 Lux (B/W, IR on)	0.01 Lux (Color, AGC on) 0 Lux (IR on)
IR LED / Range	8 Smart IR LEDs, 131' - 164' Range	2 Smart IR LEDs, 66' - 98' Range	1 Smart IR LED, 20' - 23' Range	6 Smart IR LEDs, 33' Range
Digital Noise Reduction	2/3 DNR	2/3 DNR	2/3 DNR	2/3 DNR
WDR	dWDR	dWDR	dWDR	dWDR
Audio input/-output	- / -	- / -	- / -	1 / 1
Audio Codec	-	-	-	G.711, RAW PCM
Network interface	10 / 100 Base-T	10 / 100 Base-T	10 / 100 Base-T	10 / 100 Base-T
Alarm input/output	- / -	- / -	- / -	1 / 1
Protocols	HTTP, HTTPS, TCP/IP, UDP/IP, RTSP, DHCP, NTP, PPoE, Unicast / Multicast, ONVIF		HTTP, HTTPS, TCP/IP, UDP/IP, RTSP, DHCP, NTP, PPoE, Unicast / Multicast, ONVIF	
HLC	Yes	Yes	Yes	Yes
Motion detection	Yes	Yes	Yes	Yes
ROI	Yes	Yes	Yes	-
Interfaces	RJ-45, BNC	RJ-45	RJ-45	RJ-45
Micro SD Storage	-	-	SD/SDHC/SDXC supported up to 32GB (card not included)	SD/SDHC/SDXC supported Max 64GB (card not included)
Power	PoE / 12VDC	PoE / 12VDC	PoE / 12VDC	PoE / 12VDC / 24VAC
Power Consumption	2.5W (IR LED OFF) 5W (IR LED ON)	2.5W (IR LED OFF), 5W (IR LED ON)	2.5W (IR LED OFF) 5W (IR LED ON)	5W (IR LED OFF) 8W (IR LED ON)
Operating environment	-4°F ~ 131°F	-4°F ~ 131°F	-4°F ~ 131°F	-13°F ~ 131°F
Dimensions W x D x H	4.0" x 3.8" x 11.7"	6.7" x 2.8" x 2.4"	2.1" x 3.9" (Ø)	1.8" x 6.3" (Ø)
Weight	1.5 lbs	1.4 lbs	1.4 lbs	1.5 lbs
Certifications	CE, FCC, IP66, ONVIF (Profile S)		CE, FCC, IP65, ONVIF (Profile S)	

6 MP FISHEYE DOME ACCESSORIES



Pendant Mount - ZA8-CBK637



Wall Mount - ZA8-CBK636

Intelligence Driven by Design



CBC AMERICAS Corp.
Corporate Headquarters
Tel: +1-919-230-8700

West Coast Office
Tel: +1-310-222-8600

Mexico City Office
Tel: +52 55 5280 4660

ganzsecurity.com



Scan to view mobile catalog

CBC reserves the right to modify product specifications without prior notice and assumes no responsibility for errors in this publication.
All products mentioned in this publication are acknowledged to be the property of their respective trademark owners.